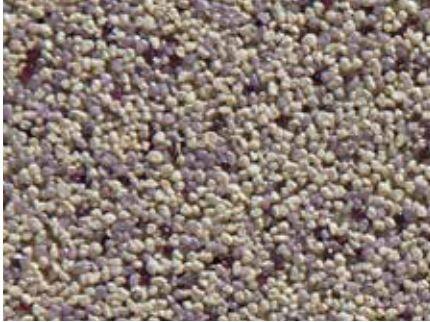


Capatect Tynki mozaikowe

Tynk o uziarnieniu 0,8-1,2 mm



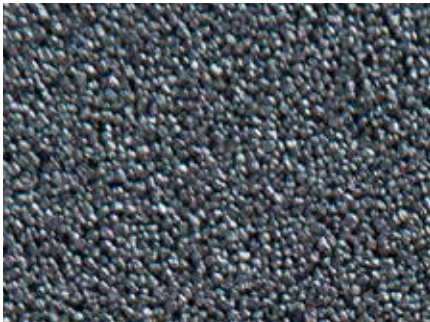
■ CD - 11



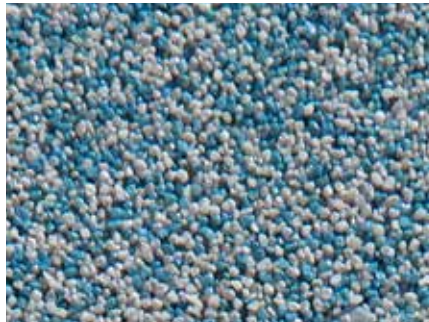
■ CD - 32



■ CD - 29



■ CD - 36



■ CD - 12



■ CD - 10



■ CD - 07



■ CD - 03



■ CD - 04



■ CD - 30

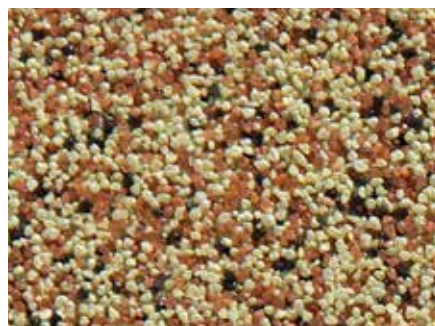


■ CD - 31

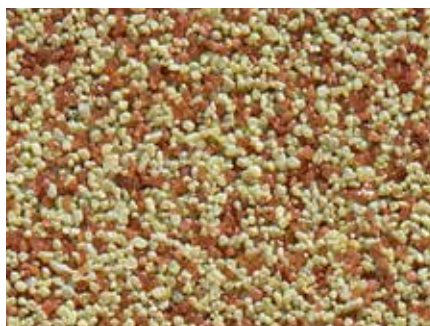


■ CD - 06

Tynk o uziarnieniu 0,8-1,2 mm



■ CD - 25



■ CD - 22



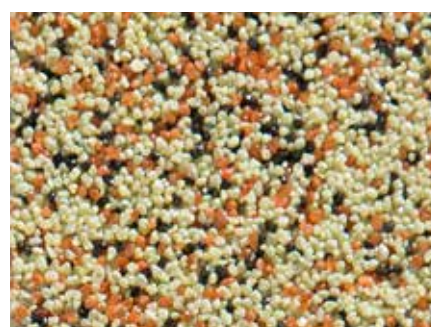
■ CD - 01



■ CD - 26



■ CD - 24



■ CD - 23



■ CD - 35



■ CD - 34



■ CD - 27



■ CD - 18

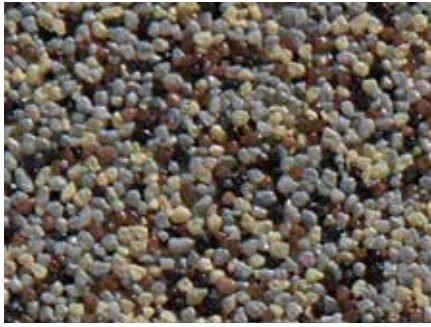


■ CD - 09

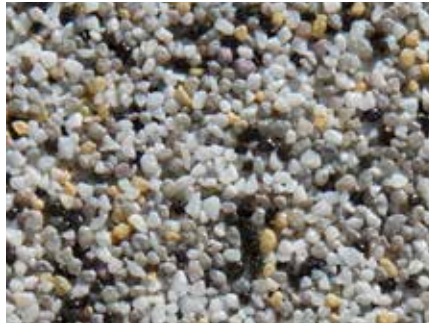


■ CD - 02

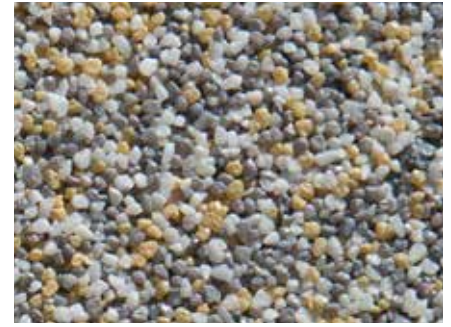
Tynk o uziarnieniu 1,0-1,6 mm



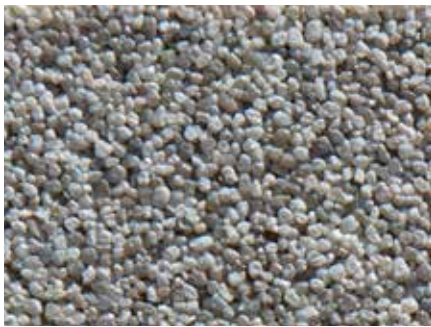
■ C-35



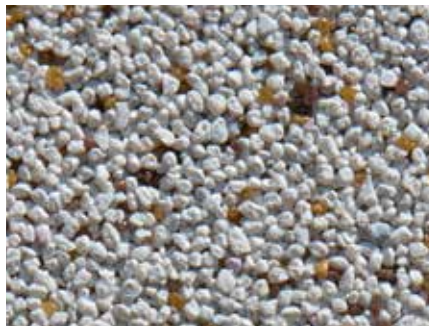
■ CL/S-8



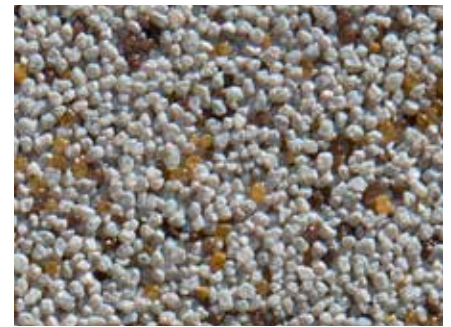
■ CL/S-1



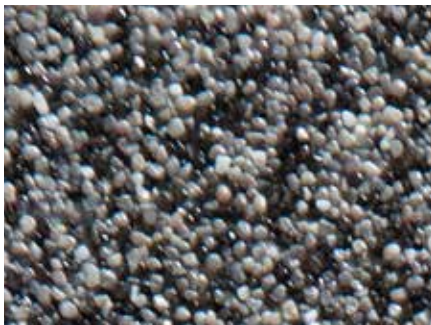
■ C-22



■ C-54



■ C-55



■ CL/S-6



■ C-28



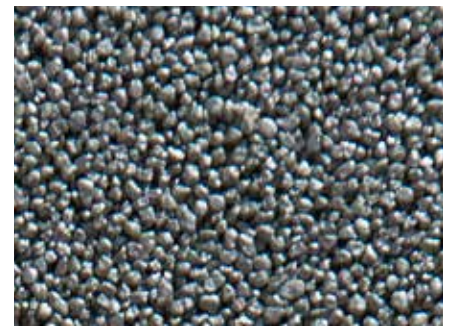
■ CL/S-4



■ CL/S-5

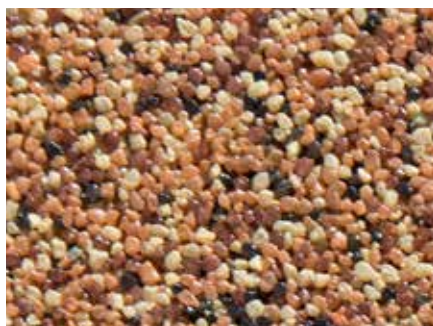


■ CL/S-7



■ CL/Sr

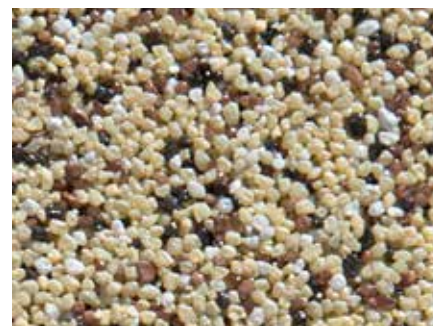
Tynk o uziarnieniu 1,0-1,6 mm



■ CL/B-9



■ C-59



■ C-32



■ CL/Zł-2



■ CL/Zł-1



■ CL/Zł-0



■ CL/B-11



■ C-122



■ CL/C-2



■ CL/Zł-3



■ CL/B-6



■ C-56

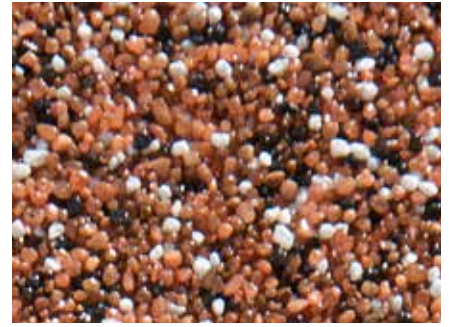
Tynk o uziarnieniu 1,0-1,6 mm



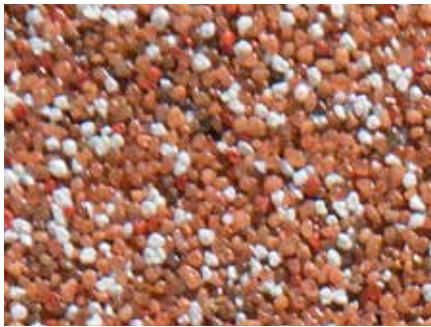
■ C-37



■ CL/C-3



■ C-46



■ C-45



■ CL/C-7



■ CL/C-8

Tynk o uziarnieniu 1,0-1,6 mm



■ CL/B-2



■ CL/B-4



■ CL/ZŁ-4



■ C-125



■ C-58



■ CL/C-4

Tynk o uziarnieniu 1,0-1,6 mm



■ C-50



■ CL/B-5



■ C-48



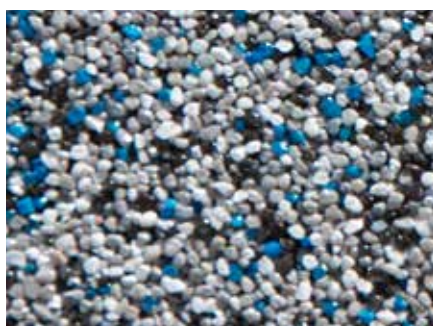
■ CL/C-52



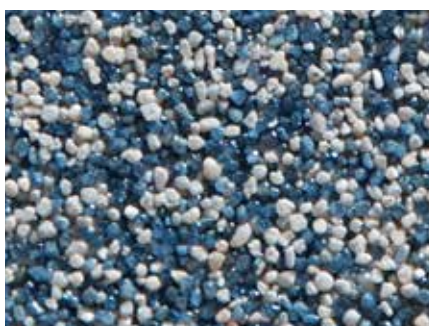
■ C-126



■ CL/B-1



■ CL/S-3



■ C-16



■ C-8



■ CL/Z-5



■ CL/Z-6



■ CL/Z-2

Producent dopuszcza możliwość odchyień kolorystycznych